

### 3-Spindle Counter Face Drilling / Milling Unit ER11/ER16

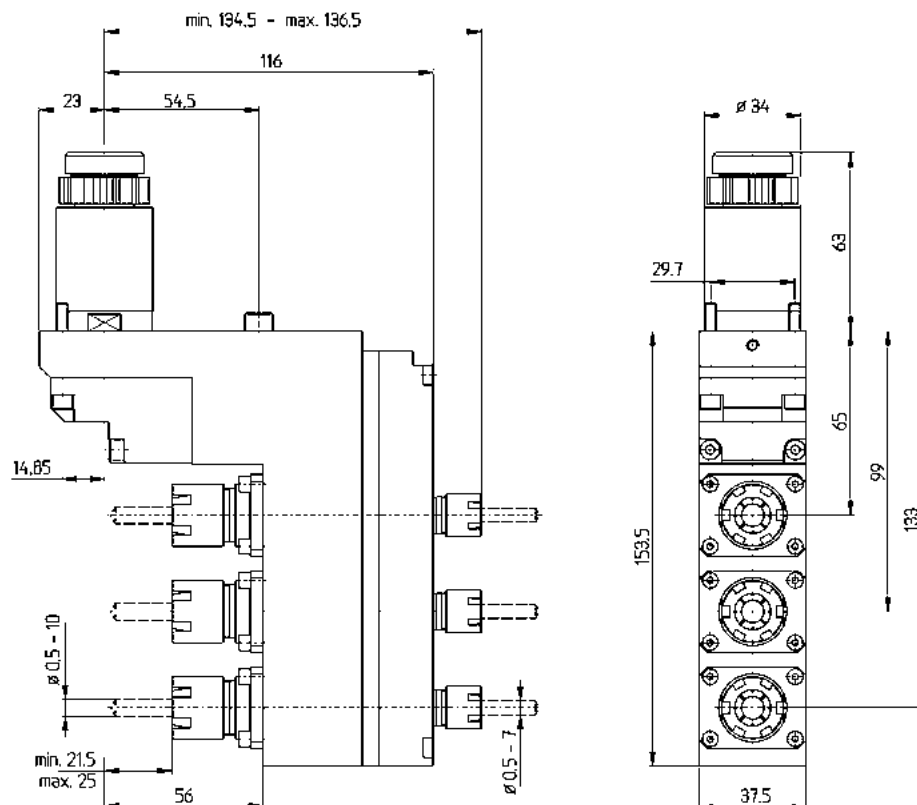
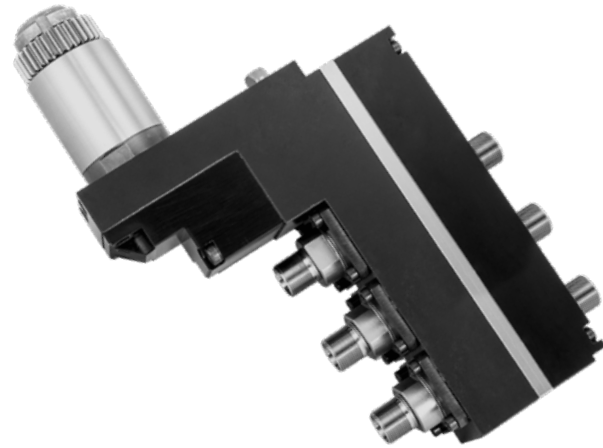
Part # STAR671-59-ER16

for SR-32J/JN

#### Technical data

Collet	ER11 / ER16
Ratio	1 : 1
Rpm at input	max. 8000 1/min
Rpm at output	max. 8000 1/min

Included With nut  
Without wrench and collets



3-Spindle Front Drilling / Milling Unit

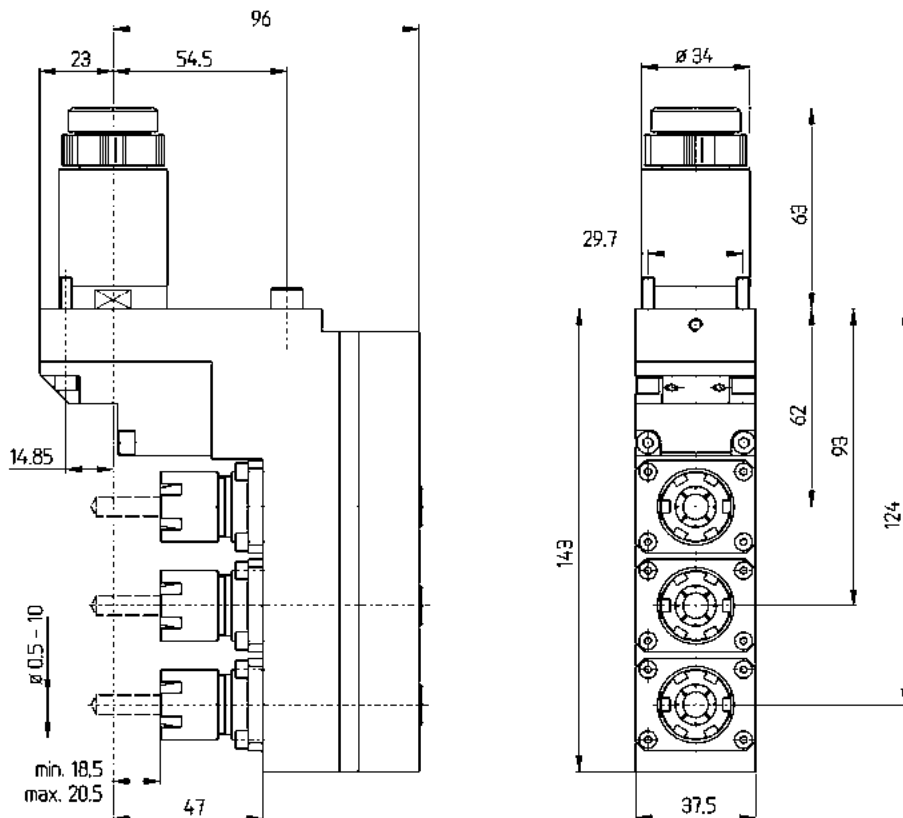
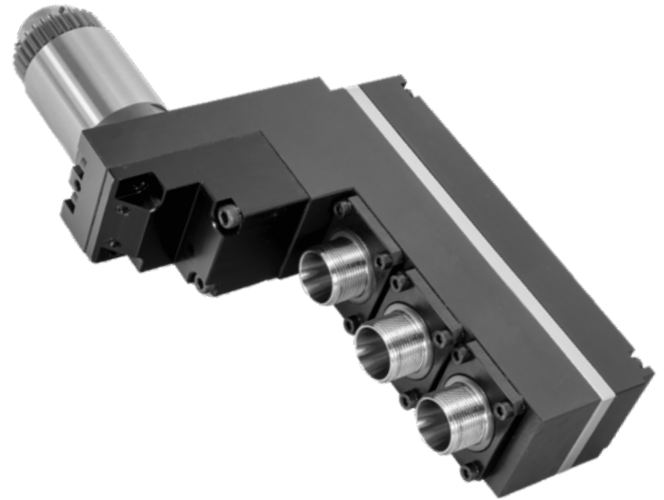
Part # STAR661-51-ER16

for SB-16D/E; SB-12/20R  
SR-20J/JN/R/II-IV

Technical data

Collet	ER16
Ratio	1 : 1
Rpm at input	max. 8000 1/min
Rpm at output	max. 8000 1/min

Included With nut  
Without wrench and collets



### 3-Spindle Counter Face Drilling / Milling Unit ER11/ER16

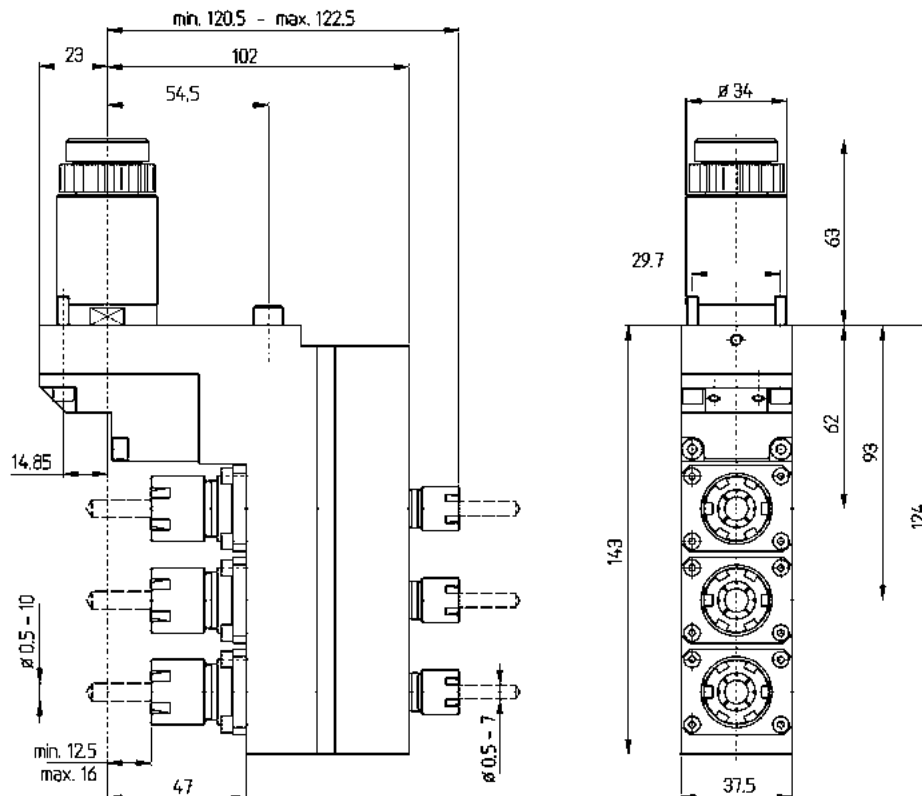
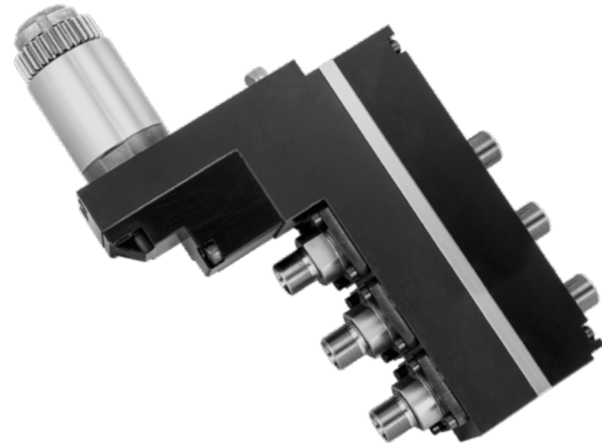
Part # STAR7.074.006-ER16

for SR-20RII  
SR-20RIV

#### Technical data

Collet	ER11 / ER16
Ratio	1 : 1
Rpm at input	max. 8000 1/min
Rpm at output	max. 8000 1/min

Included With nut  
Without wrench and collets



**3-Spindle Counter Face  
Drilling / Milling Unit ER11/ER11**

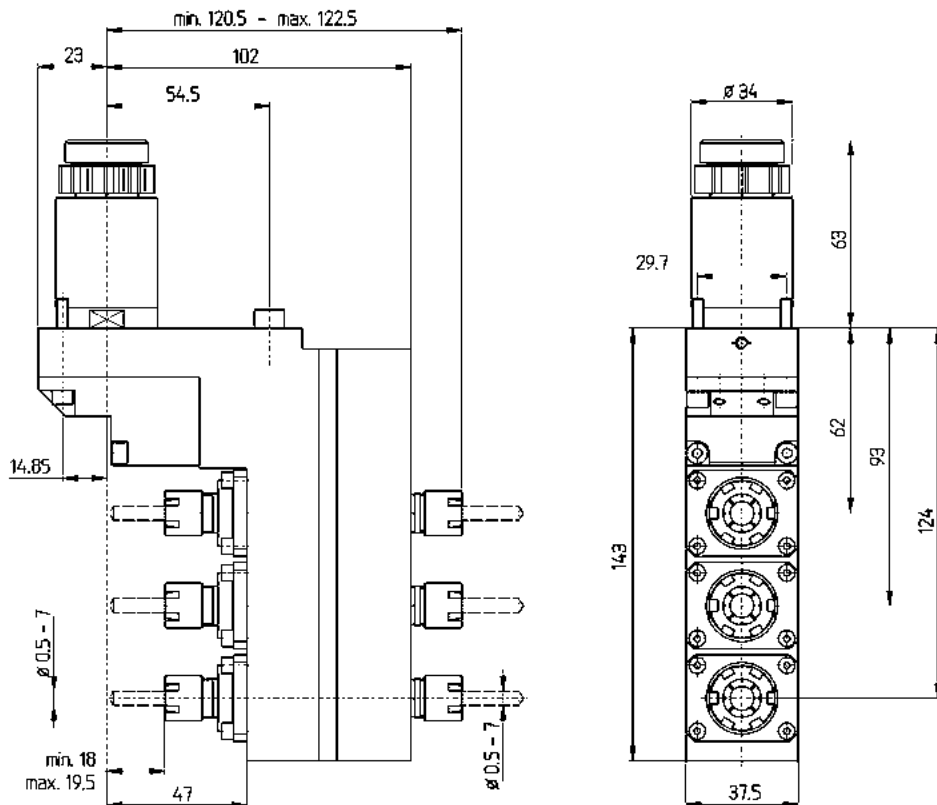
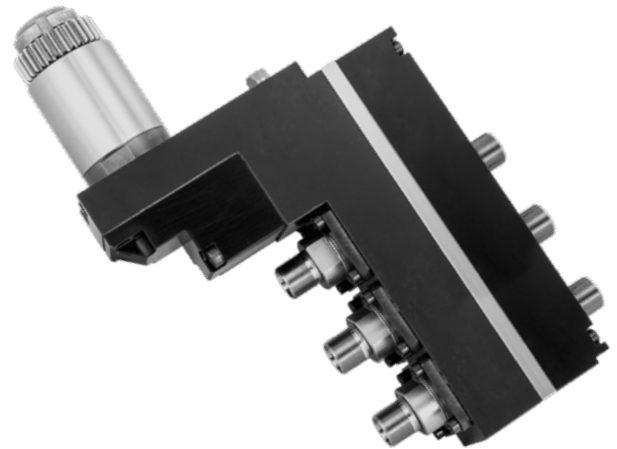
**Part #** STAR7.074.006-ER11

**for** SR-20RII  
SR-20RIV

**Technical data**

<b>Collet</b>	ER11
<b>Ratio</b>	1 : 1
<b>Rpm at input</b>	max. 8000 1/min
<b>Rpm at output</b>	max. 8000 1/min

**Included** With nut  
Without wrench and collets



## 2-Spindle Front Drilling / Milling Unit

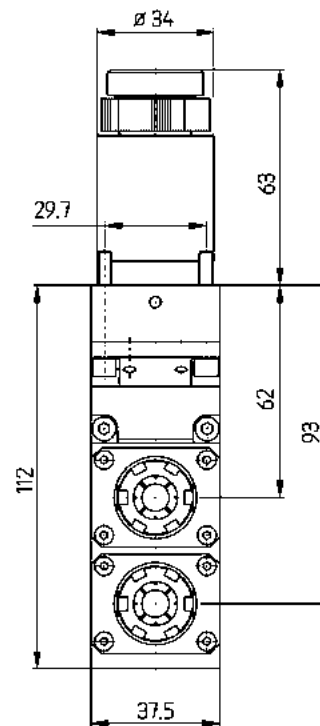
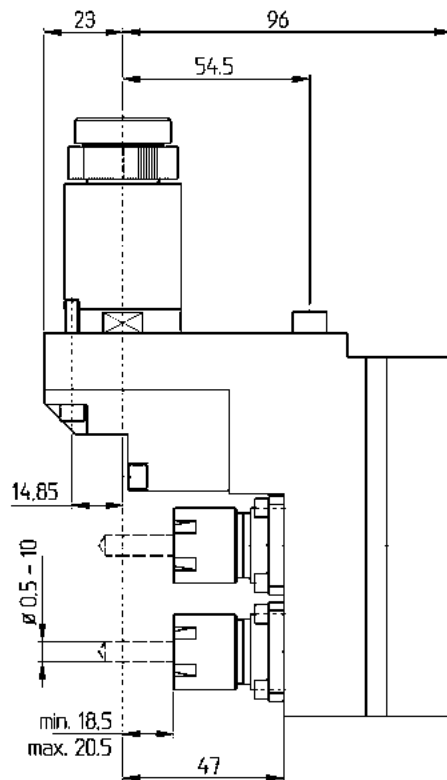
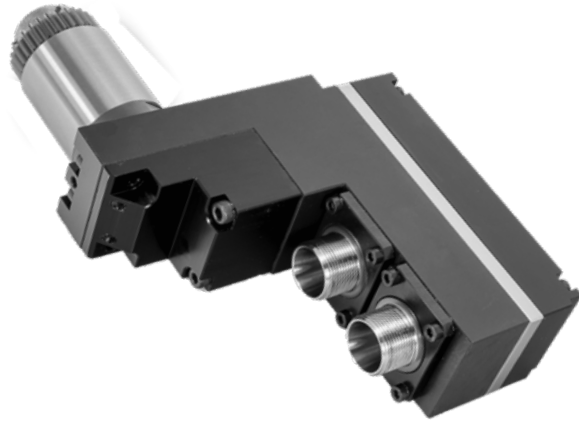
Part # STAR541-51-ER16

for SB-16D/E; SB-12/20R  
SR-20J/JN/R/II-IV

## Technical data

Collet	ER16
Ratio	1 : 1
Rpm at input	max. 8000 1/min
Rpm at output	max. 8000 1/min

Included With nut  
Without wrench and collets



**2-Spindle Counter Face  
Drilling / Milling Unit ER11/ER16**

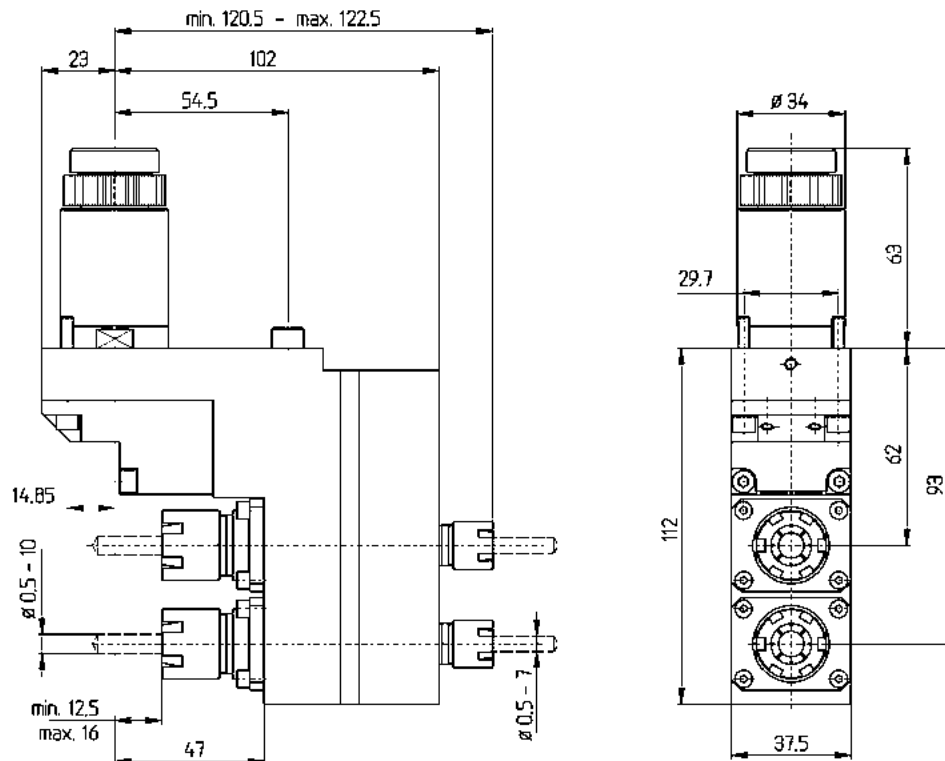
**Part #** STAR661-59-ER16

**for** SR-20J/JN/RII-IV

**Technical data**

<b>Collet</b>	ER16 / ER11
<b>Ratio</b>	1 : 1
<b>Rpm at input</b>	max. 8000 1/min
<b>Rpm at output</b>	max. 8000 1/min

**Included** With nut  
Without wrench and collets



**2-Spindle Counter Face  
Drilling / Milling Unit ER11/ER11**
**Part #** STAR661-59-ER11

**for** SR-20J/JN/R11-IV

**Technical data**

<b>Collet</b>	ER11
<b>Ratio</b>	1 : 1
<b>Rpm at input</b>	max. 8000 1/min
<b>Rpm at output</b>	max. 8000 1/min

**Included** With nut  
Without wrench and collets
